

Measurement Device VCPLab

For cable samples with an outer diameter up to 48 mm (1.89")

Product No.: 401.0003.05



Technical details:

Size (width x length x height)	600 x 360 x 1110 mm 23.6 x 14.2 x 43.7 Inch
Weight	33 kg 73 lbs
Supply Voltage	100 - 240 V 50 - 60 Hz
Input Power	max. 100 Watt
Resolution	corresponds to 0.1% of the image field
Lighting	LUMIMAX® LED lighting
Camera*	1-2 cameras
Measuring range	up to max. 48 mm (1.89") outer diameter
Measuring according to cable standards	EN 50396 HD 605 ICEA S-94-649-2000 IEC 60502 -1 IEC 60811 -201; -202; -203 IEC 60840 LV112 (A Factor)

Device details:

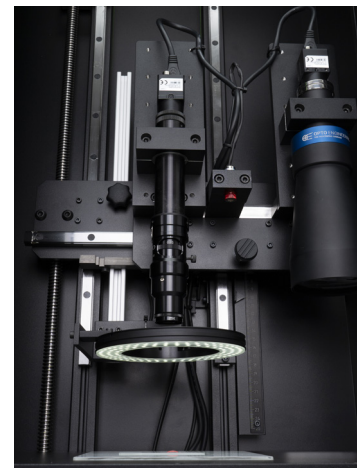
- Extremely precise measurements thanks to integrated high-resolution sensors
- Manual focusing and exposure for 2D measurements in the laboratory
- Robust case
- Excellent seals against extraneous light
- Safe from impacts and vibrations
- Measurement results in just seconds
- Use of high performance LUMIMAX® lighting
- Quasi shadow-free transmitted light illumination
- 2 integrated camera systems possible
- Standardised individual components
- Very easy measuring procedure
- Suitable software: VELOX, CAQ-System ProCable3

Area of application:

- Camera-based system for measuring cable geometries of insulations and sheaths
- For very thin cores smaller than 1 mm (0.04") up to sheath thicknesses with an outer diameter of 48 mm (1.89")
- Sustainable cost savings through fast and efficient measurement
- Designed especially for the use in laboratories

Optional:

- VCPLab inclusive All-In-One Windows PC



* the most suitable configuration can only be determined with your minimum and maximum sample outer diameter

