

# VisioCablePro®

**AVAILABLE AS FROM**

# NOW

# THE NEW ALPHA SERIES. THE NEW FLEXIBILITY.

The new **AlphaOne** - the combination of precision and flexibility. With the compact and simultaneously highly precise measuring device for **cross section measurements of cables and hoses**, you receive new possibilities in your quality assurance process. Configure a measuring device individually adapted to your extrusion line. **Save material costs** together with maximum flexibility.



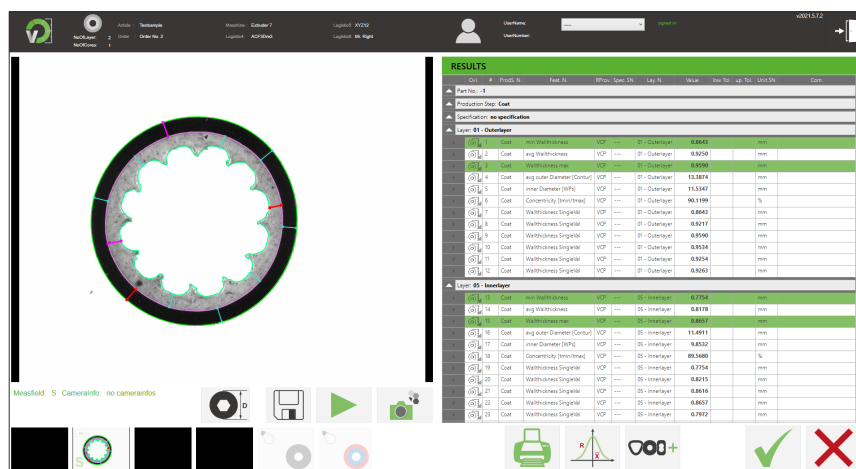
## ALPHA ONE FACTS.

- One measuring field - customer specified
- Quick and very easy measurement
- Compact design - especially suited for the use at a production line
- Measurements according to standards IEC 60811 -201; -202; -203, LV112, ICEA S-94-649
- Suitable for all VisioCablePro® software
- Various external CAQ software are connectable

## NEW SOFTWARE INCLUDED.

# VELOX

Our new **software VELOX** helps you evaluate obtained test results from our cable measuring devices securely and is always **included, when buying one of our products from the VisioCablePro® Alpha series**. Therefore, VELOX is your guarantee for secure quality testing of geometrical attributes of cables, isolated conductors, hoses and pipes.



## CONTACT.



iiM AG measurement + engineering  
Neuer Friedberg 5  
98527 Suhl  
GERMANY



**(+49) 3681 / 455 19-0**



**VisioCablePro.Sales@iimAG.de**



**www.cable-measurement.com**



## AUTOMATIC CABLE MEASURING DEVICES

### PRODUCT COMPARISON



**AlphaOne**



**VCPX5**

<b>MEASURING FIELD</b>	one measuring field, between 0 and 95 mm (0-3.74") for example: 1-5; 3. 5-18; 5-24; 7-34 mm (0.04-0.2; 0.1-0.7; 0.2-0.9; 0.3-1.3")	up to 3 measuring fields, between 0 and 130 mm (0-5.11")
<b>CAMERA</b>	one camera	up to 3 cameras
<b>MULTI-LAYER CABLE SAMPLES</b>	(✓)	✓
<b>FRONTLIGHT AND BACKLIGHT</b>	✓	✓
<b>AUTOMATIC LIGHTING</b> <small>Directly programmable via the database</small>	✗	✓
<b>COLOUR IMAGES</b> <small>Using an intelligent color lighting for complex, multi-layered samples, colour images are generated despite a Black&amp;White camera.</small>	✗	✓
<b>DATABASE CONNECTION</b>	is possible	is possible
<b>INTEGRATED PC</b>	✗	✓
<b>INTERFACES</b>	1x USB 3.0 (Connection to control PC)	4x USB 2.0 for peripheral devices 1x Ethernet
<b>OPERATION VIA TOUCH PANEL</b>	✗	✓
<b>INTUITIVE OPERATION &amp; EASY USER TRAINING</b>	✓	✓

## CONTACT.



iim AG measurement + engineering  
Neuer Friedberg 5  
98527 Suhl  
GERMANY



(+49) 3681 / 455 19-0



[VisioCablePro.Sales@iimAG.de](mailto:VisioCablePro.Sales@iimAG.de)



[www.cable-measurement.com](http://www.cable-measurement.com)

